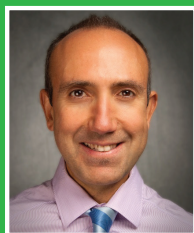


# Liver Cancer

Consolato M. Sergi, MD, PhD, MPH, FRCPC, FCAP  
Editor



Consolato M. Sergi, MD, PhD, MPH, FRCPC, FCAP, is a full professor of pathology and adjunct professor of pediatrics at the University of Alberta, Edmonton, Canada. He is also a consultant for *Standards and Guidelines in Carcinogenesis of Chemical Compounds* published by the World Health Organization/International Agency on Research on Cancer (WHO/IARC monographs), Lyon, France. His research interests include hepatic tumors, metabolic diseases, cholangiopathies, organ transplantation, and gut/bile microbiome using cell lines, animal models, and clinical samples. He identified the role of apoptosis in ductal plate malformation of the liver, characterized sialidosis, and found two new genes, *WDR62*, which encodes a centrosome-associated protein (Nat Genet 2010) and *OTX2*, mutations of which can contribute to dysgnathia (J Med Genet 2012). Professor Sergi has published more than 300 research/review articles and several books and book chapters. He has supervised and mentored many PhD students and clinical fellows. He is also on the editorial boards of several scientific journals.

